

NEW

CE

RILCO
ROOFING & CLADDING

WESTLAND

Universal Capped Dry-Fix Clay Ridge

DESCRIPTION

Format: Capped

Size: 445 x 232mm

Thickness: 15mm

Weight: 5.2kg

Colour: Slate Black



150mm Coated Tex Screws

445mm in length, the WESTLAND capped angle universal clay ridge is suitable for both slate and tiled roofs where a dry fix system is preferred.

The WESTLAND ridge is fitted with a black coated 150mm Steel Tex screw with washer for a more secure connection to the substructure.

We recommend the THYSIS Fast-Fix Dry Ridge kit is used underneath the Westland ridge to allow for continuous airflow.

The WESTLAND ridge is easy to fit, needs no mortar and is maintenance-free.

The Slate Cottage
Nuttstown
Clonee
Dublin 15

Tel: +353 (0)18015690

Email: info@rilco.ie

Web: www.rilco.ie



**ROLL-OUT
RIDGE ROLL**

Dimensions: 6000mm x 30mm



NEW

CE

RILCO
ROOFING & CLADDING

LOGICA

Universal Inline Dry-Fix Clay Ridge

DESCRIPTION

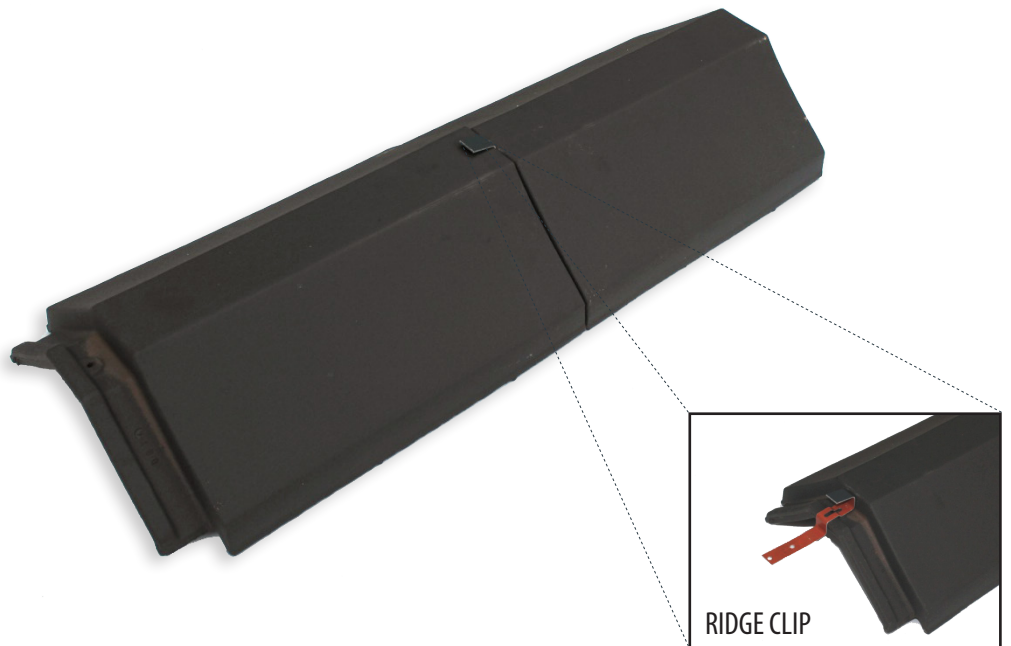
Format: Inline

Size: 405 x 280mm

Thickness: 15mm

Weight: 4.7kg

Colour: Slate Grey



405mm in length, our new LOGICA inline universal clay ridge is suitable for both slate and tiled roofs.

The LOGICA ridge is fitted with a coated steel ridge clip for more secure connection to substructure.

The LOGICA universal ridge is easy to fit, needs no mortar and is maintenance-free.

LOGICA accessories include end caps, three way junction piece and finishing hip ends.



The Slate Cottage
Nuttstown
Clonee
Dublin 15

Tel: +353 (0)18015690

Email: info@rilco.ie

Web: www.rilco.ie